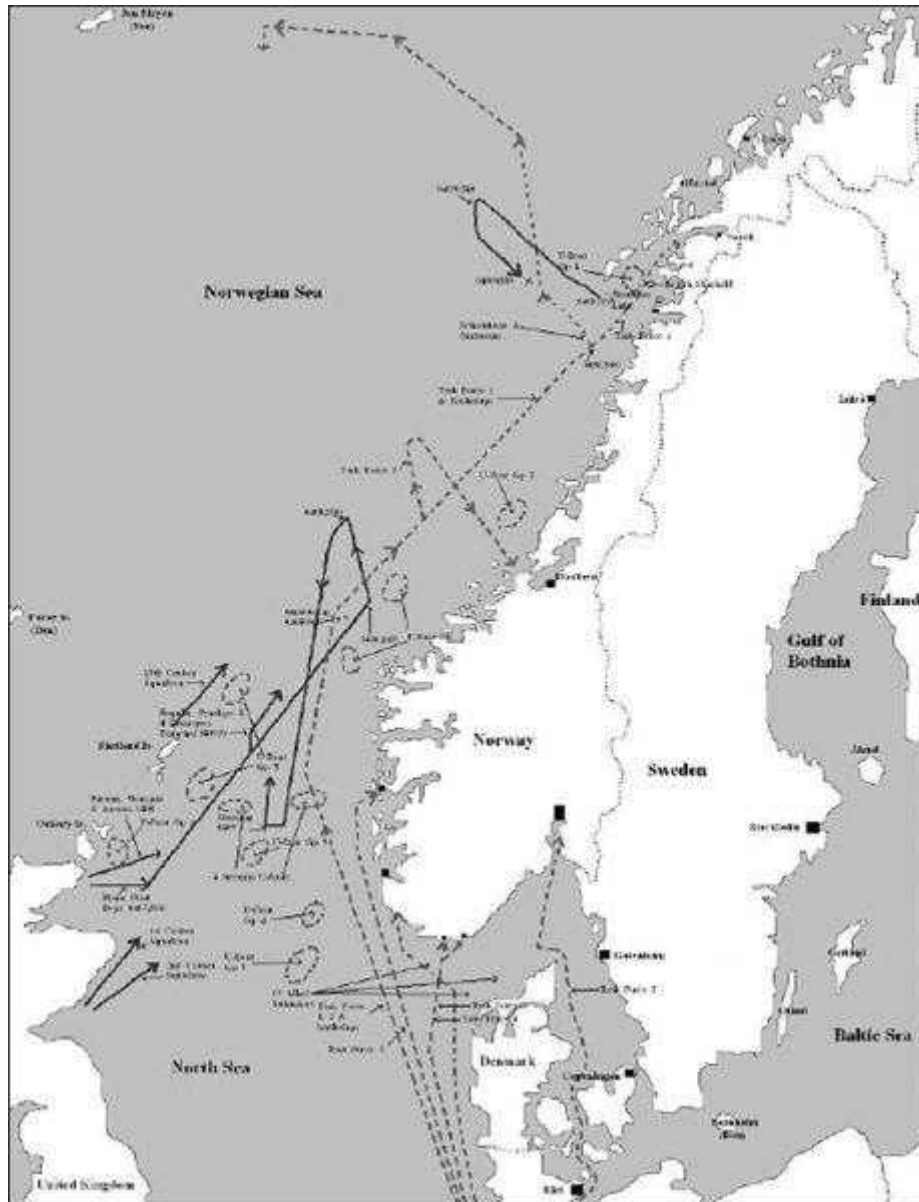
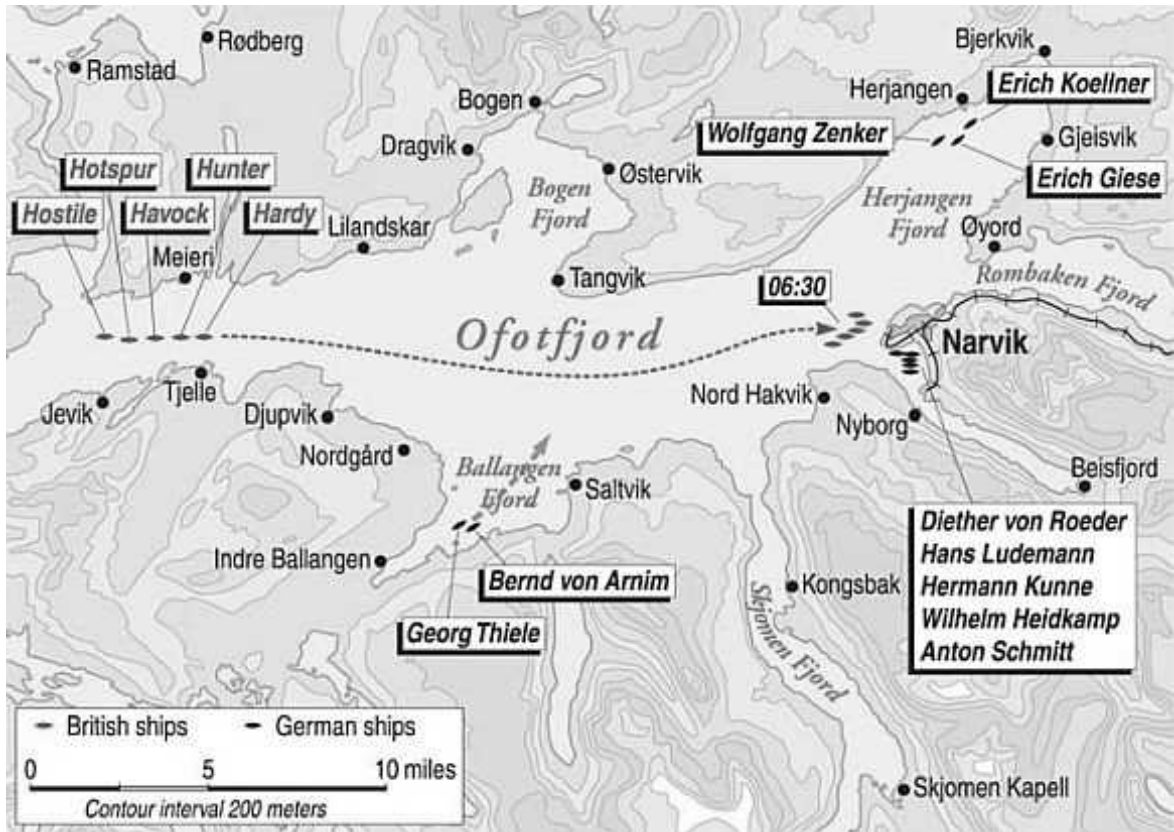


MAPS

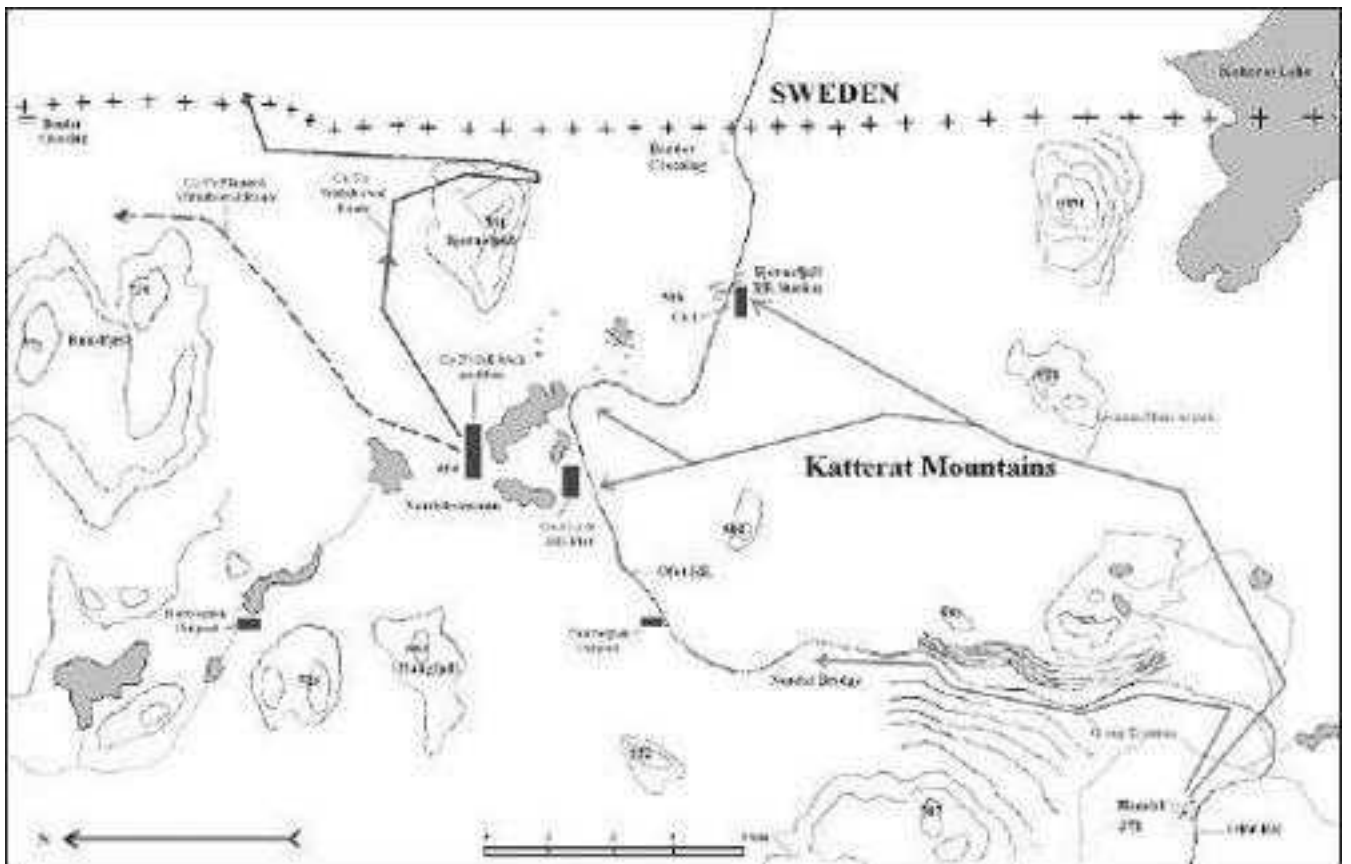




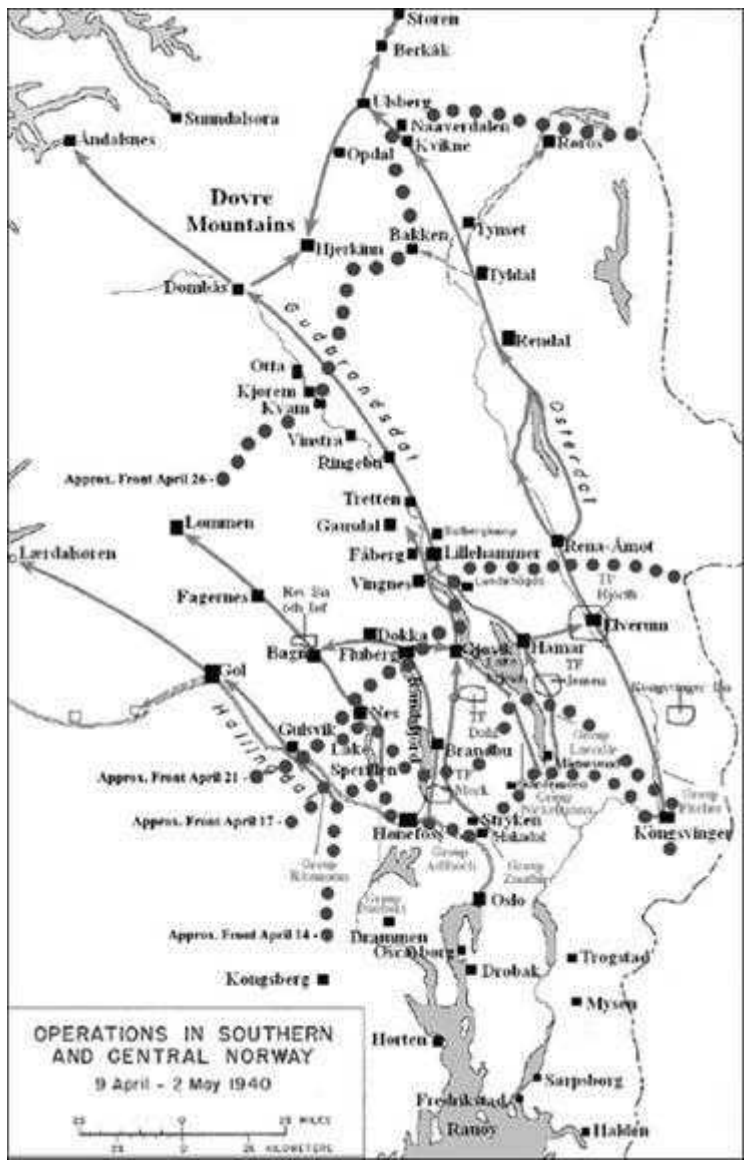
Ships passing in the night. On April 8, 1940, German flotillas, in a surprise operation, were able to slip through the teeth of British naval superiority to begin the invasion of Norway.

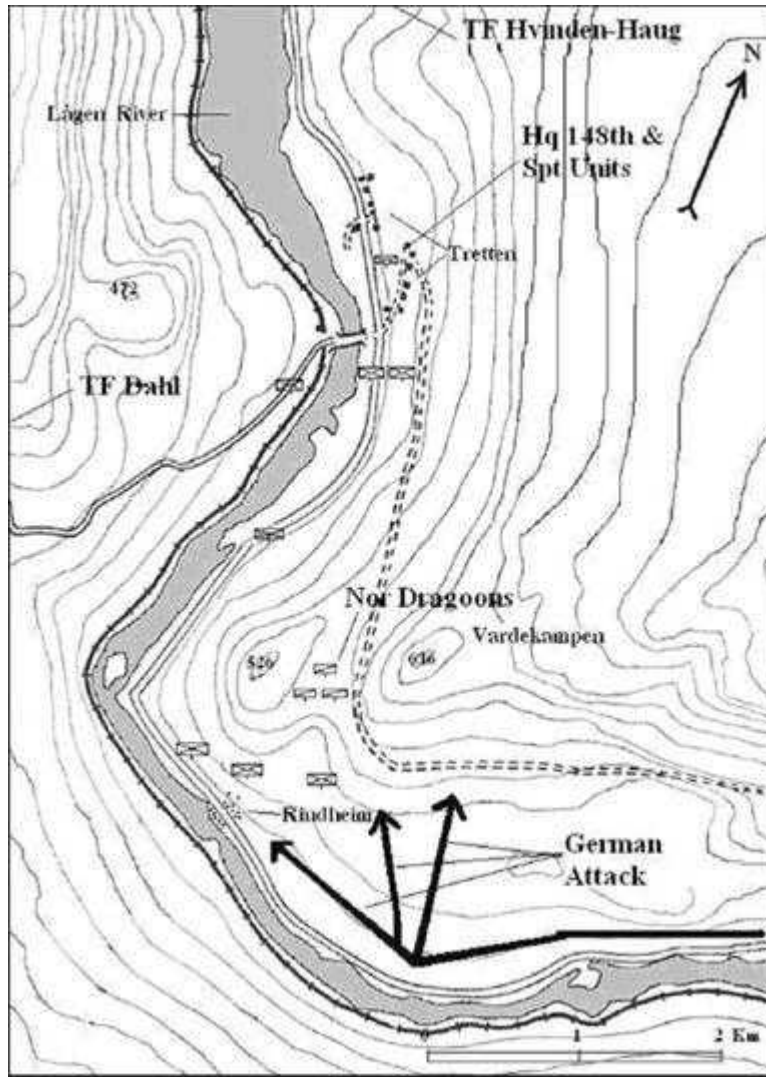


British warships attacking the Germans on the approaches to Narvik.



The Battle of Bjørnefjell on April 16 saw German troops surprising and defeating a larger Norwegian force, thus securing the all-important railway line to Sweden.





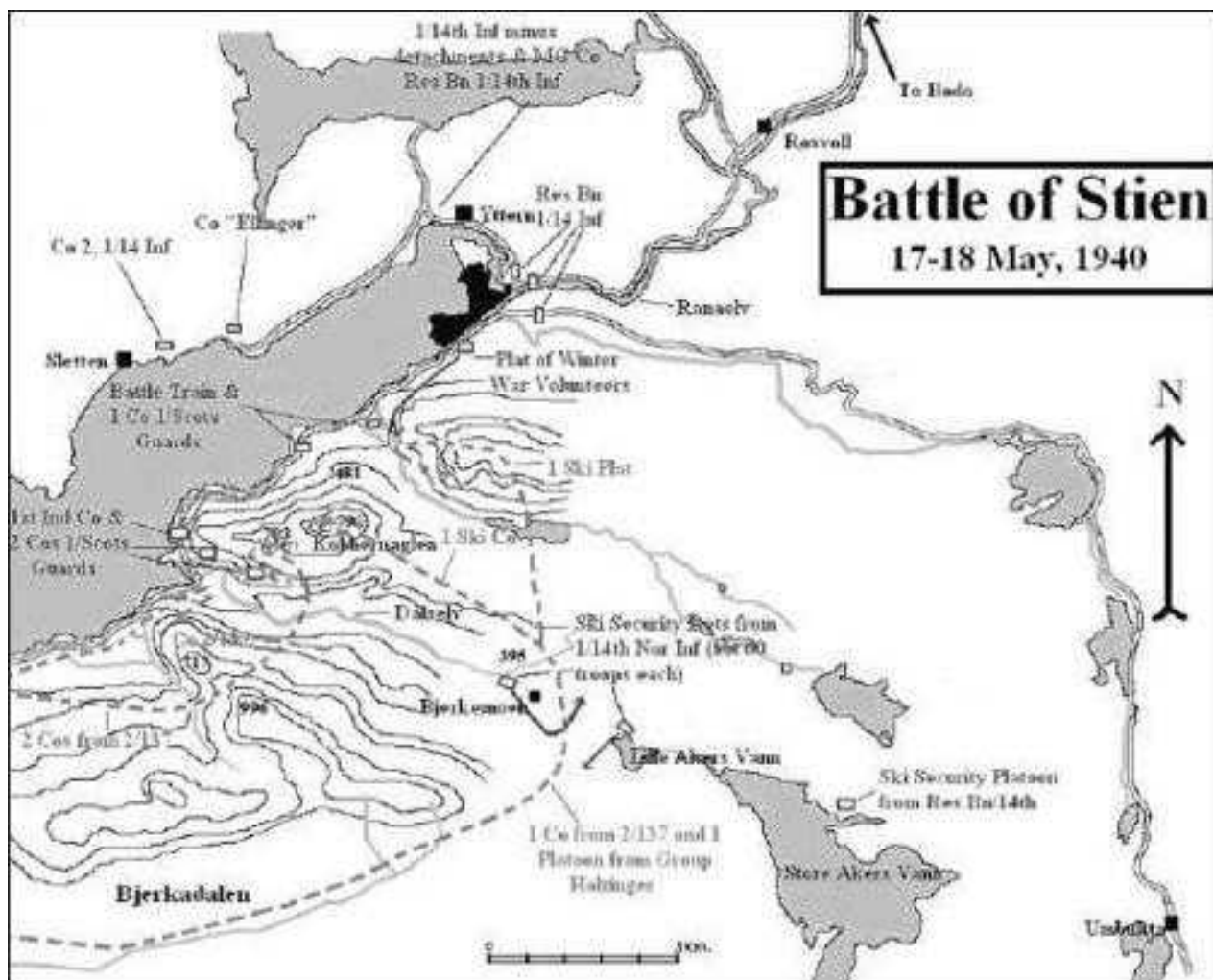
The Battle of Tretten, in which the Germans defeated a combined British-Norwegian force, and the British 148th Brigade all but ceased to exist.

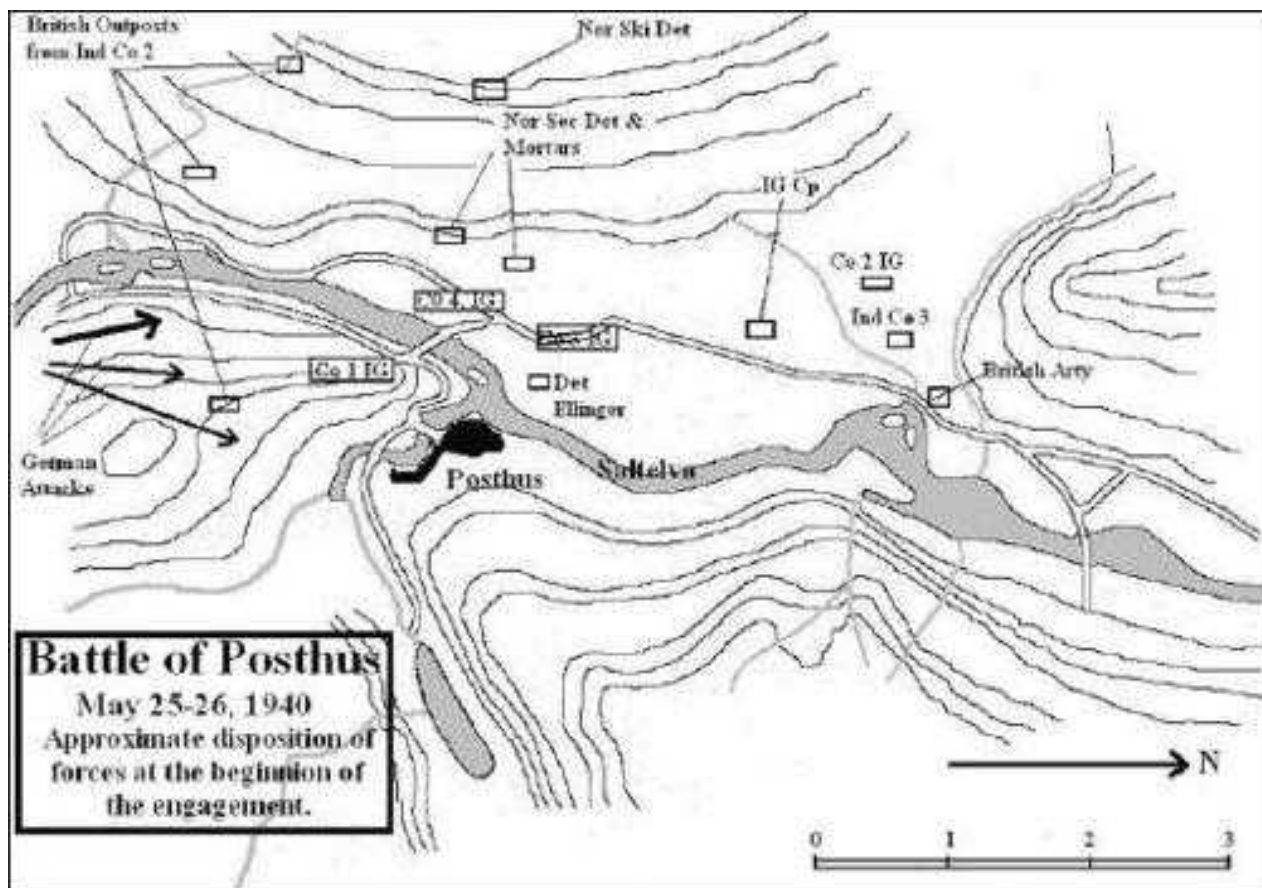


The area between Trondheim, Norway's ancient capital (bottom), and the city of Namsos (top).







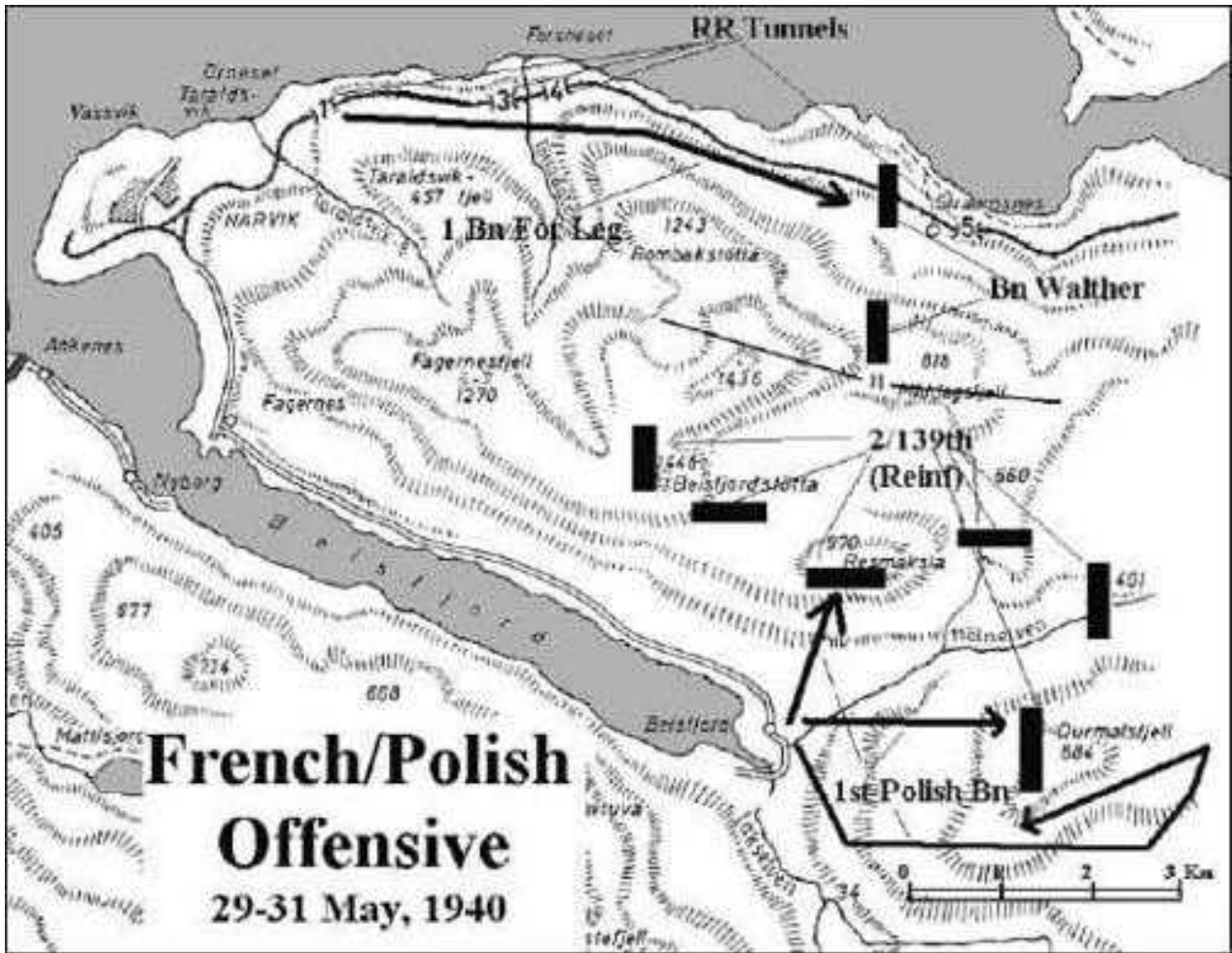


Battle of Posthus
 May 25-26, 1940
 Approximate disposition of forces at the beginning of the engagement.

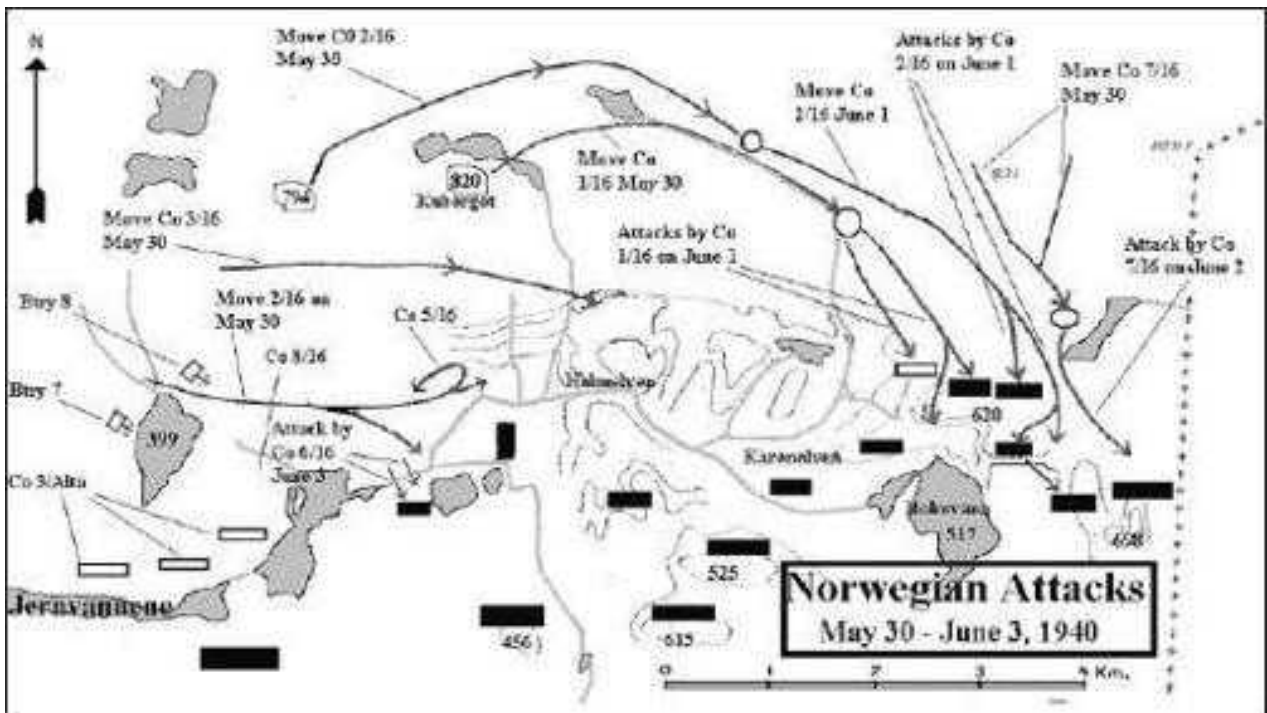




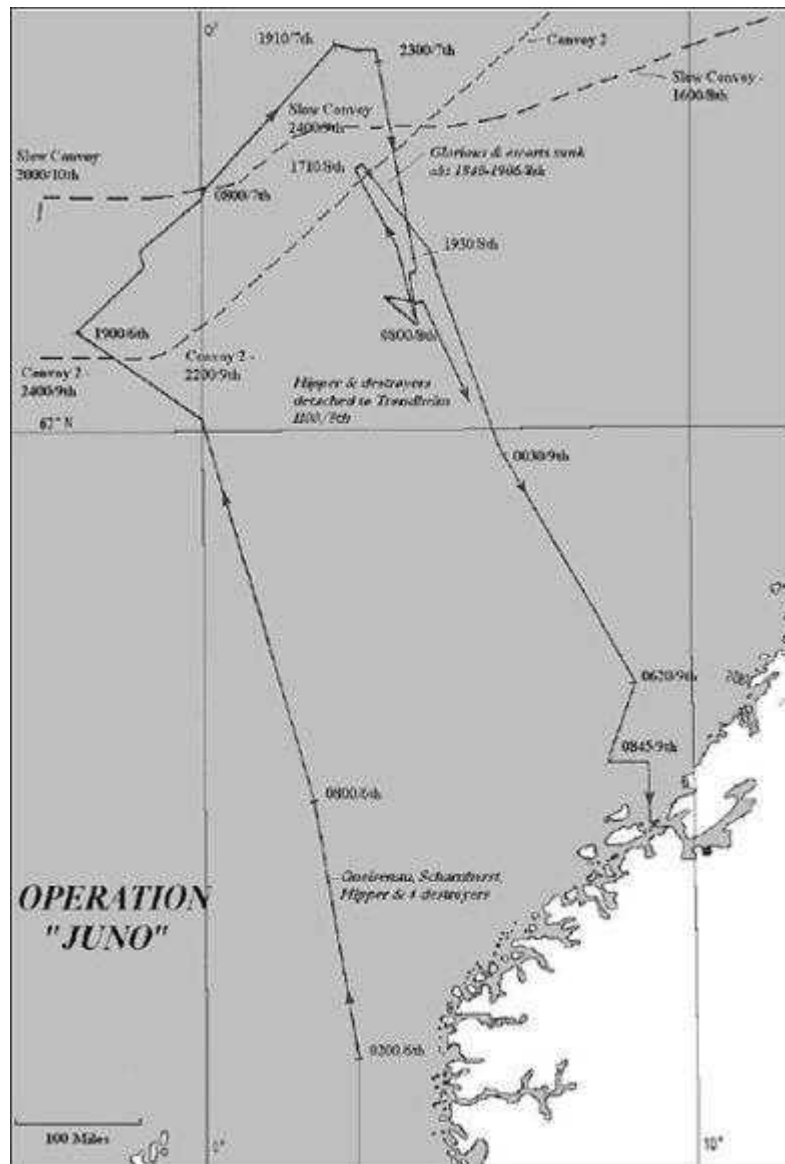
The region south of Narvik along Norway's central west coast.



The Allies repeatedly attempted to break the German grip on Narvik until events in France forced efforts to cease.



Norwegian forces persisted in attacking after the Allied evacuation had begun, but finally capitulated to the Germans on June 10, 1940.

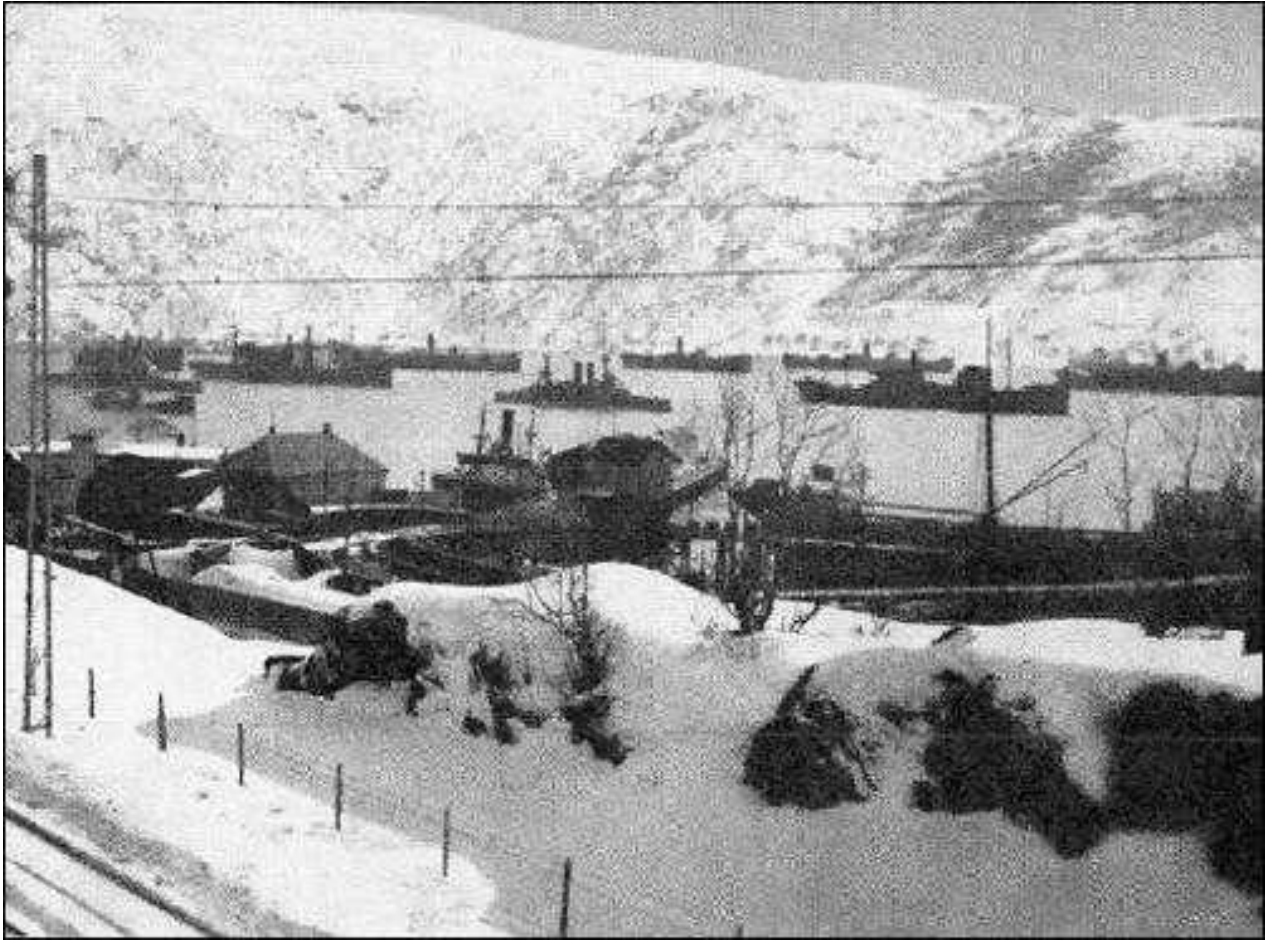


The British evacuation that culminated in the loss of the *Glorious*.

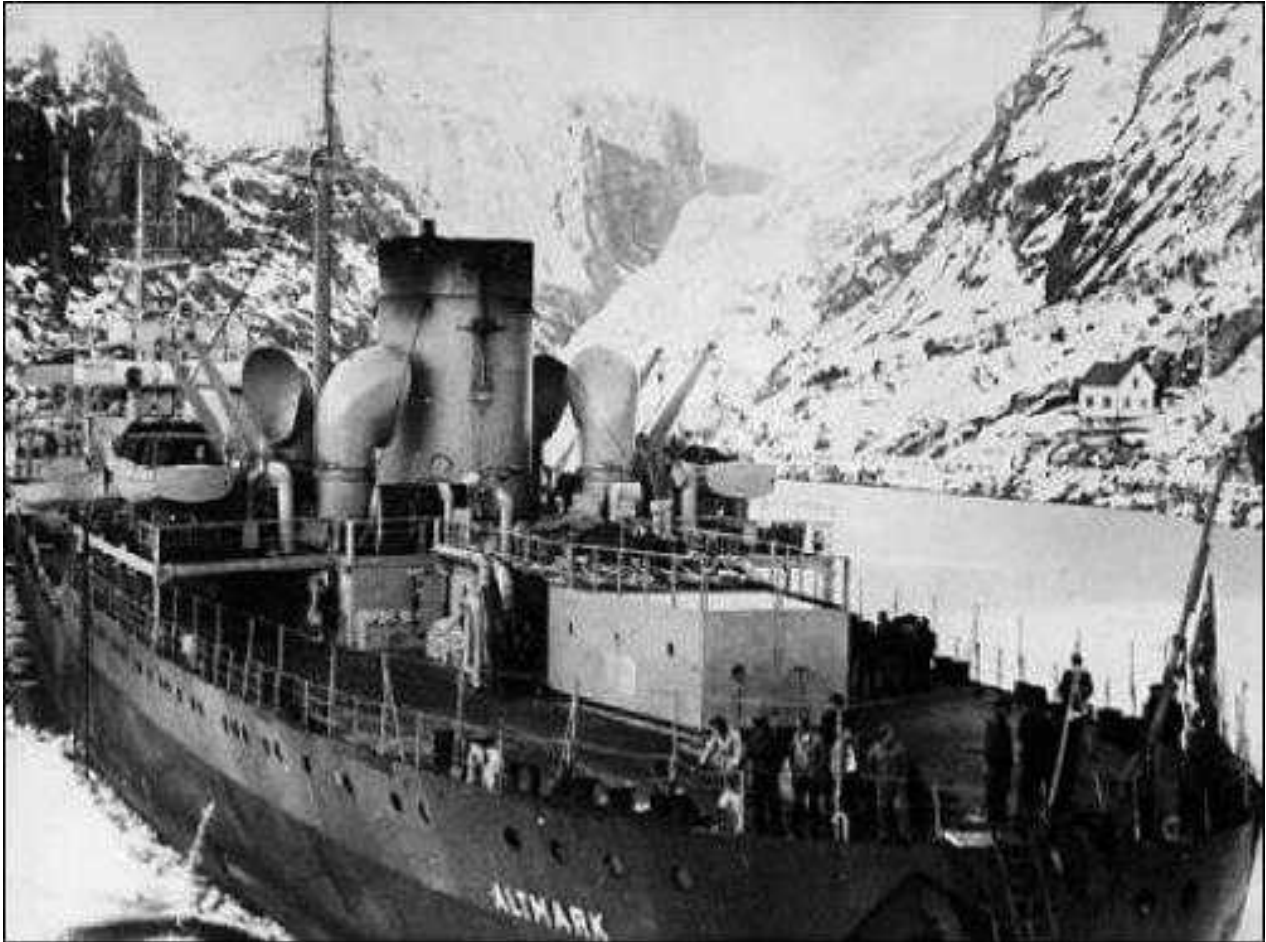
PICTURES



The town of Narvik in 1940.



Narvik on April 8, 1940. The two coastal defense ships are at center and left.



The German supply ship ALTMARK, which was also carrying British prisoners.



Narvik in 1940 (with author's annotations).



The British destroyer COSSACK.



The German battleship GNEISENAU (SCHARNHORST was of the same class).



The German heavy cruiser ADMIRAL HIPPER.



Summer 2007 view of the Gratang Valley looking generally to the west-northwest, with Gratangsbotn Fjord in the distance. The ridgeline to the right is where the Alta Battalion was located during the battle.



A 1984 photo of Bjerkevik from the west.



German Admiral Günther Lütjens.



Admiral Dudley Pound, First Sea Lord.



The town of Elverum in ruins.



German seaplane transport in Norwegian fjord.



The British destroyer GLOWWORM on fire as seen from the bridge of the German heavy cruiser ADMIRAL HIPPER.



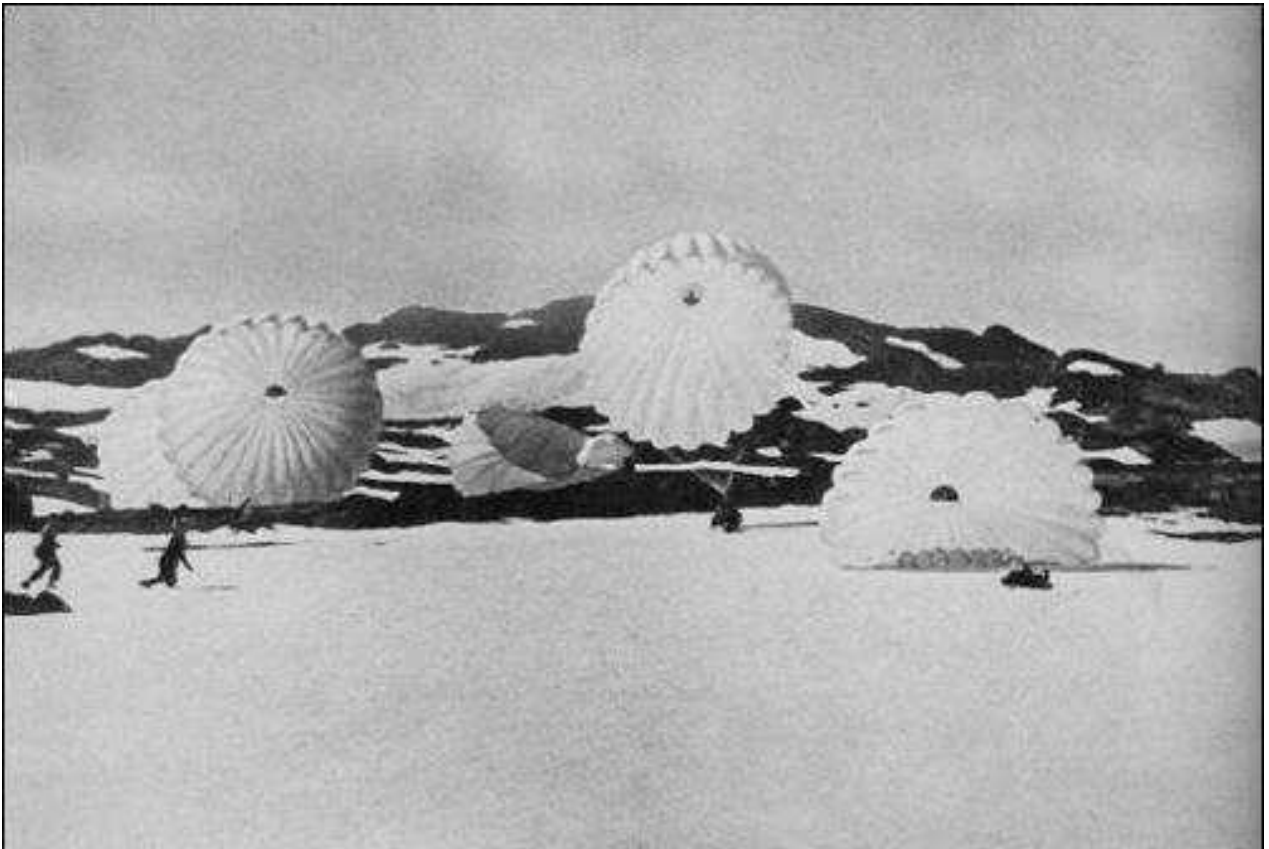
German airborne drop near Narvik.



Narvik harbor after British attack on April 10 with two German destroyers at the pier.



German troops advancing through a burning Norwegian town.



German paratroopers landing at Bjørnefjell, near Narvik.



Adolf Hitler and Major General Eduard Dietl, commander of German mountain troops.



Brigadier General Marie Emilie Béthouart, commander of French forces at Narvik.



French Alpine troops in the Narvik area.



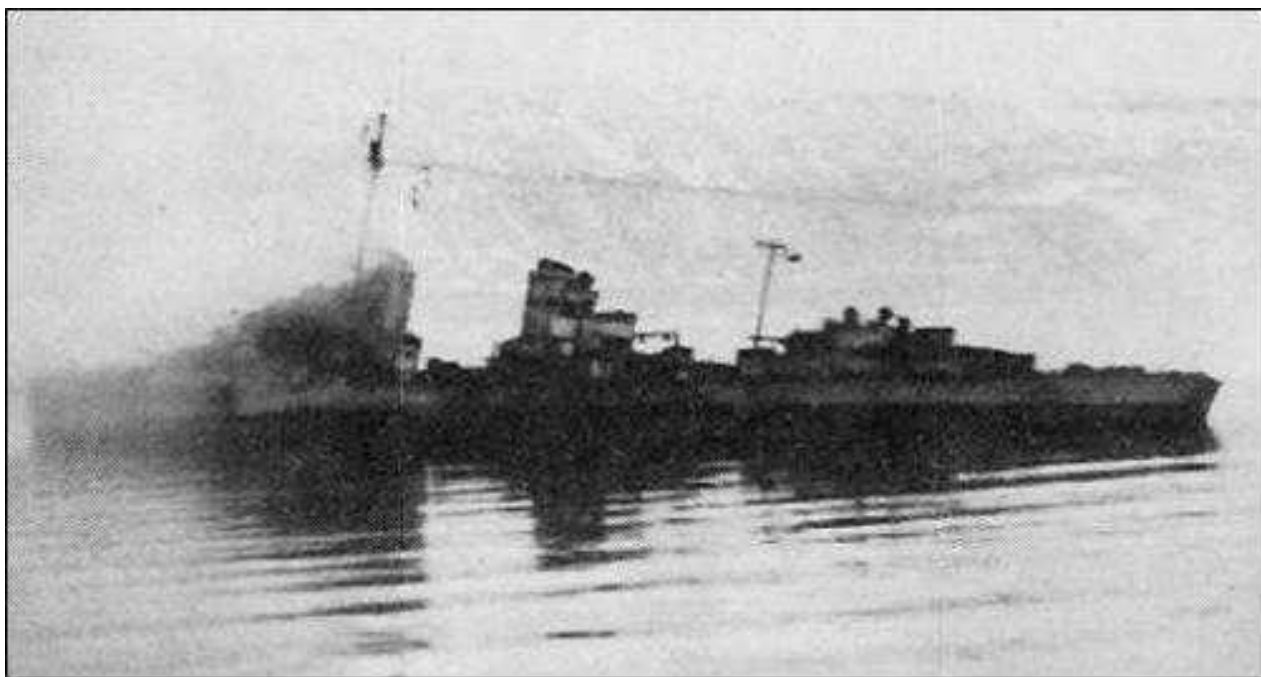
German troops landing from seaplane.



The British battleship WARSPITE and escorts entering Ofotfjord on April 13, 1940.



Wreck of the German destroyer HANS LUDEMANN.



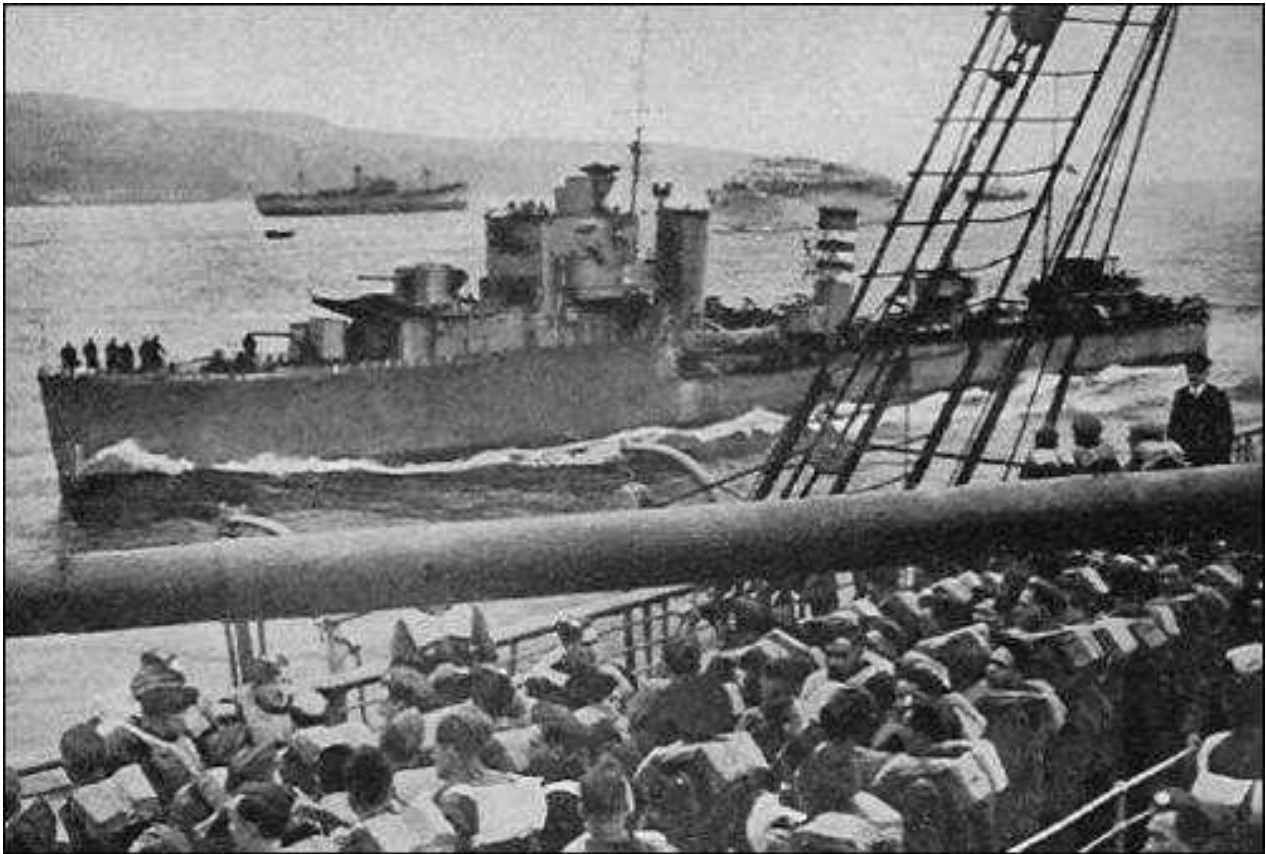
The German destroyer ERICH GIESE on fire and sinking.



The British destroyer HMS COSSACK.



German mountain troops and naval personnel in the Ankenes Mountains with Narvik in the background.



Allied troop convoy in Norway.



French tank stuck in the mud a short distance from the beach in Narvik.



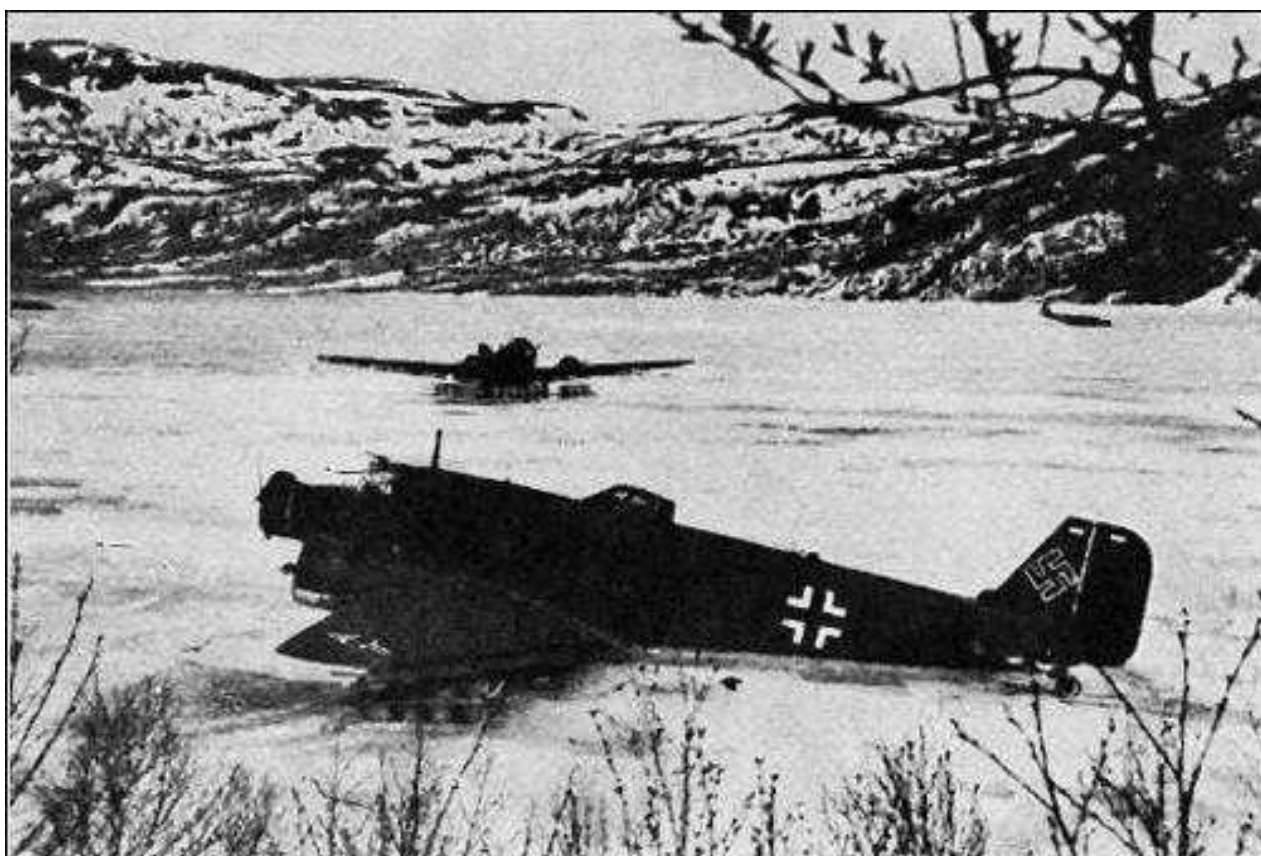
Photo of Narvik Harbor taken from a German aircraft.



Norwegian patrol in the Narvik area.



Major General Zygmunt Bohusz-Szyszko, commander of Polish troops at Narvik.



German Ju-52s on Hartvigvann (Hartvig Lake).



Destruction of ships and railroad stock in Narvik following a British attack.
